

## Parts List and Wiring Diagrams

### Model PH-88 Headset



The PH-88 headset is a super lightweight, single sided headset for the ultimate in day-long comfort. The PH-88 features a high quality monaural dynamic earphone with dynamic noise cancelling microphone on an adjustable boom that can be bent to practically any mouth-to-mic position. The unit has a straight cord and is available in various connector configurations.

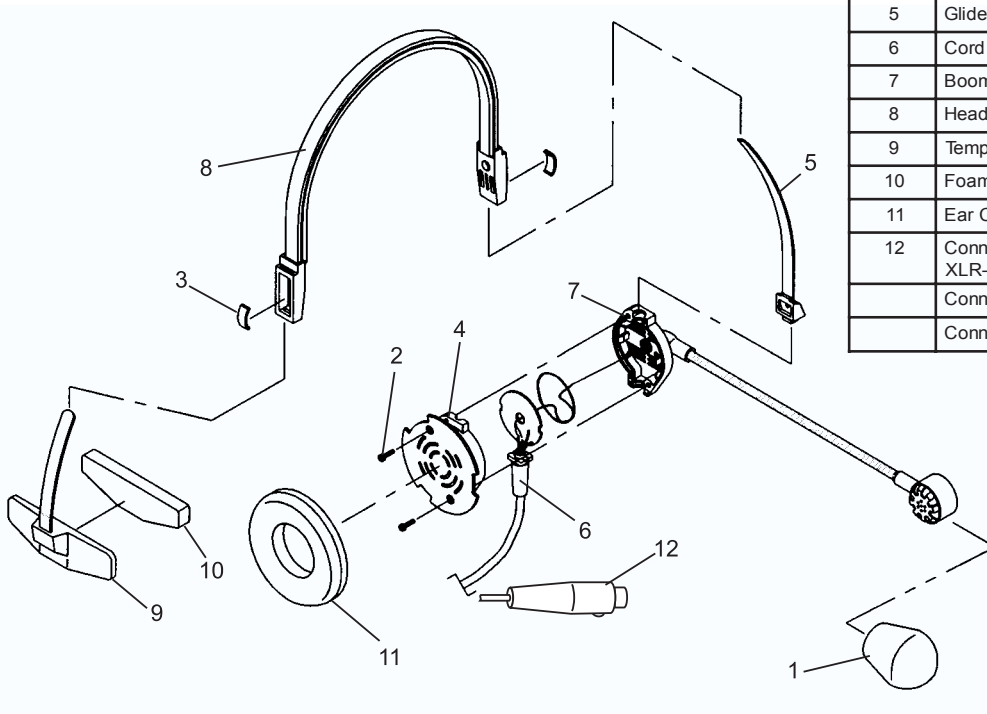
#### Specifications

Receiver Type ..... Dynamic  
 Receiver Impedance ..... 300 ohms  
 Microphone Type ..... Dynamic  
 Microphone Impedance ..... 200 ohms  
 Weight ..... 4.6 ozs  
 Cord ..... 6 ft. straight

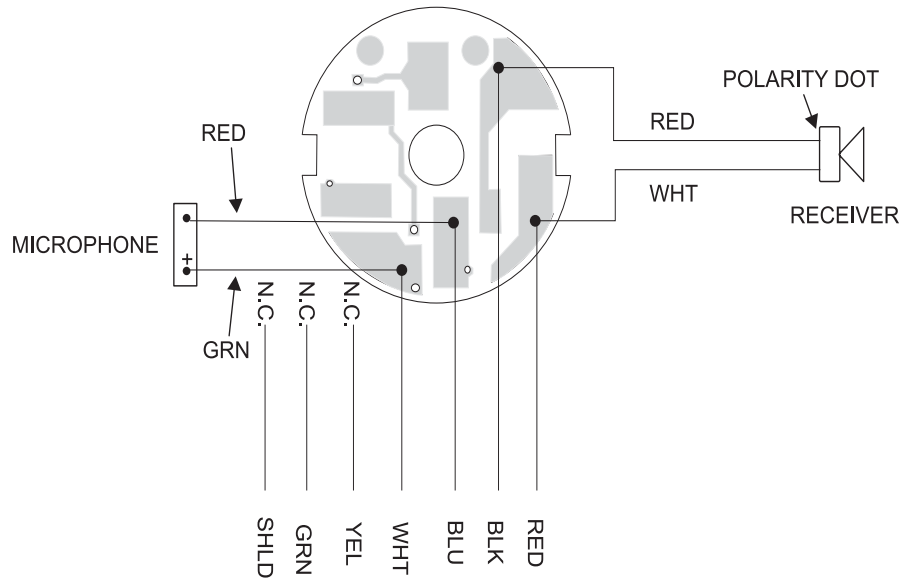
### Parts List

ITEM NO.	DESCRIPTION	QTY	PART NO.
1	Windscreen	1	59747-001
2	PT-Pan Head Screw, KA15 x 6(.236) LG., Black	2	590404-360
3	Glider Spring	2	64305-000
4	Housing Assy.	1	64308-107
5	Glider Assy.	1	64310-000
6	Cord Amp Assy.	1	64311-053
7	Boom Mic / Housing Assy.	1	800499-100
8	Headband Assy.	1	64352-026
9	Temple Plate	1	70531-003
10	Foam Pad	1	70533-000
11	Ear Cushion	1	590626-000
12	Connector, PH-88 & PH-88E, XLR-4F	1	35320-004
	Connector, PH-88R, XLR-4M	1	35398-004
	Connector, PH-88R5, XLR-5M	1	35398-005

#### Exploded View

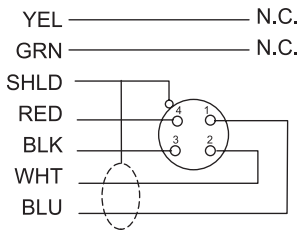
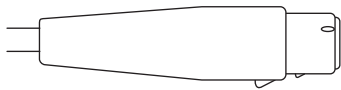


# Wiring Diagram



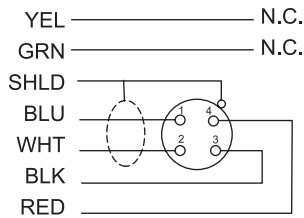
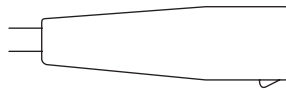
# Connector Wiring

**PH-88 / PH-88E**



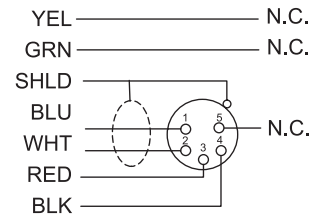
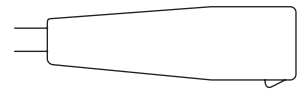
300852-200, -203

**PH-88R**



300852-201

**PH-88R5**



300852-202